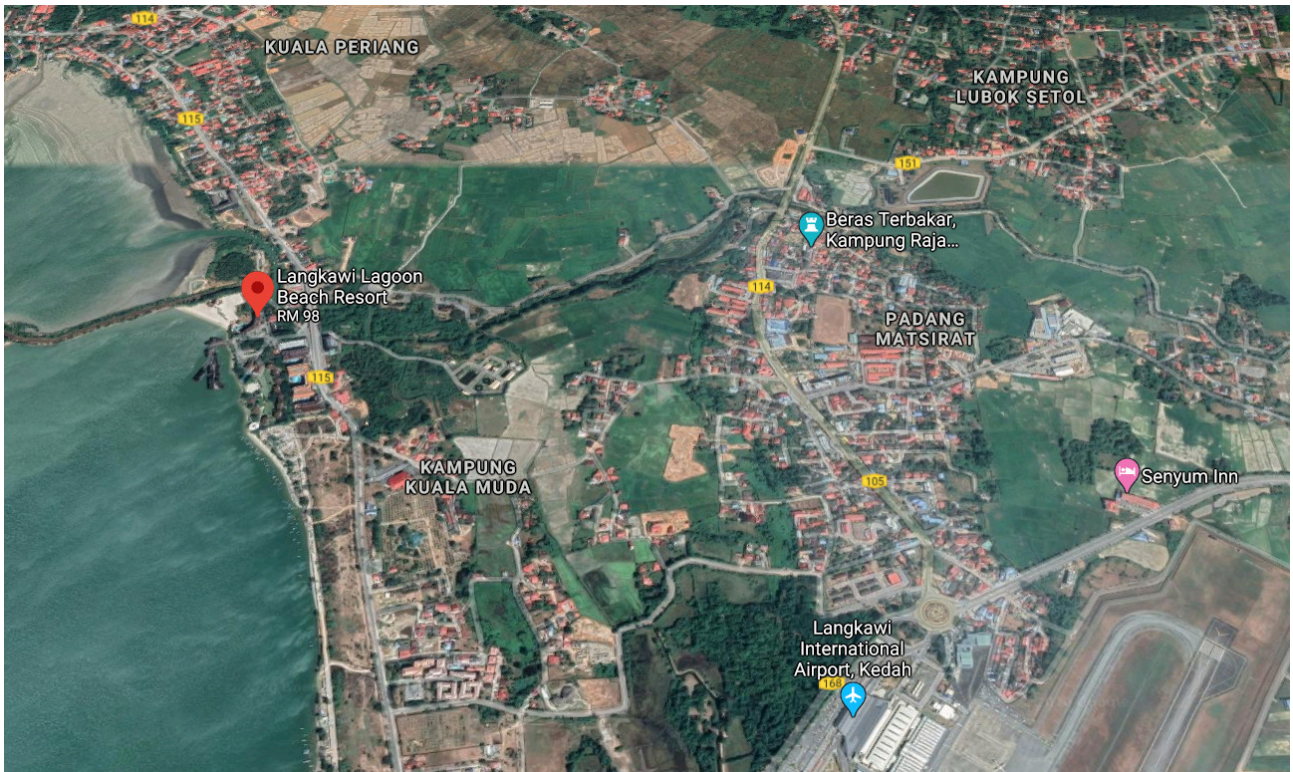
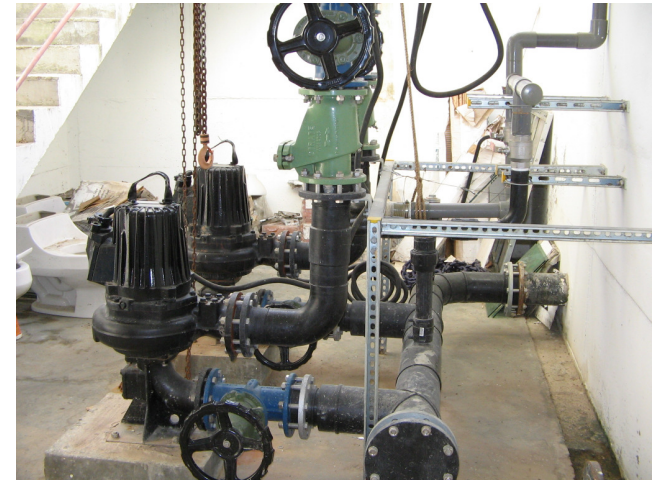


Langkawi Lagoon / MALAYSIA



9P29+X8 Langkawi, Kedah



Data Teknikal:

Jumlah PE	700
Tanki: logam besi	20 m ³
Ditanam mendatar dalam tanah	
Pam Vakum:	2 buah
Kapasiti menyedut:	2 x 15 kW 2 x 630 m ³ /h
Pam discaj:	2 buah
Kapasiti pam :	2x 4.7 kW
Penyambungan Chamber ke rumah:	30
Injap Interface:	Injap Roevac® 2.5"
Biofilter:	Segi 4 tepat 5 x 7 m
Ditauliahkan:	February 2002

Technical Data:

Connected PE	700
Vessel:	20 m ³ Steel Vacuum Tank horizontally installed, buried in the ground
Vacuum Pumps:	2 Units
Pump Suction Capacity:	2 x 15 kW 2 x 630 m ³ /h
Discharge Pumps:	2 Units
Pump Capacity:	2 x 4.7 kW
House Connections:	30 Collection Chambers
Interface Valve Units	2.5" Roevac® Valves
Biofilter	rectangular, 5 x 7 m
Commissioning:	February 2002



ASH MANN VACUUM SERVICES

Letter Box 5, Room 1203, 12th Floor,
Wisma Pahlawan, Jalan Sultan Sulaiman,
5000 Kuala Lumpur, Malaysia
Tel.: +60162056189 , +60163416189, +60167743229
E-mail: contact@ashmannservices.com
Website: www.ashmannservices.com