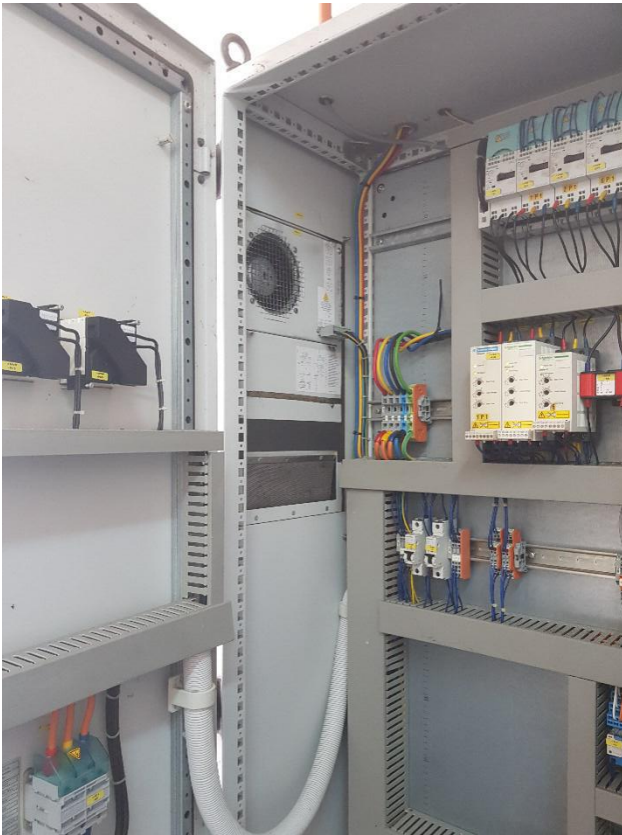


Panel cooler repair works

Issues: Rittal panel cooler malfunctioned.



- 1) Causing power tripping whenever the compressor starts
- 2) Fan motor damaged, burn smell and loud running voice witnessed



RITTAL TOP THERM PLUS

RITTAL GmbH & Co.KG
Auf dem Stützelberg
D-35745 Herborn

RITTAL SK 3361100

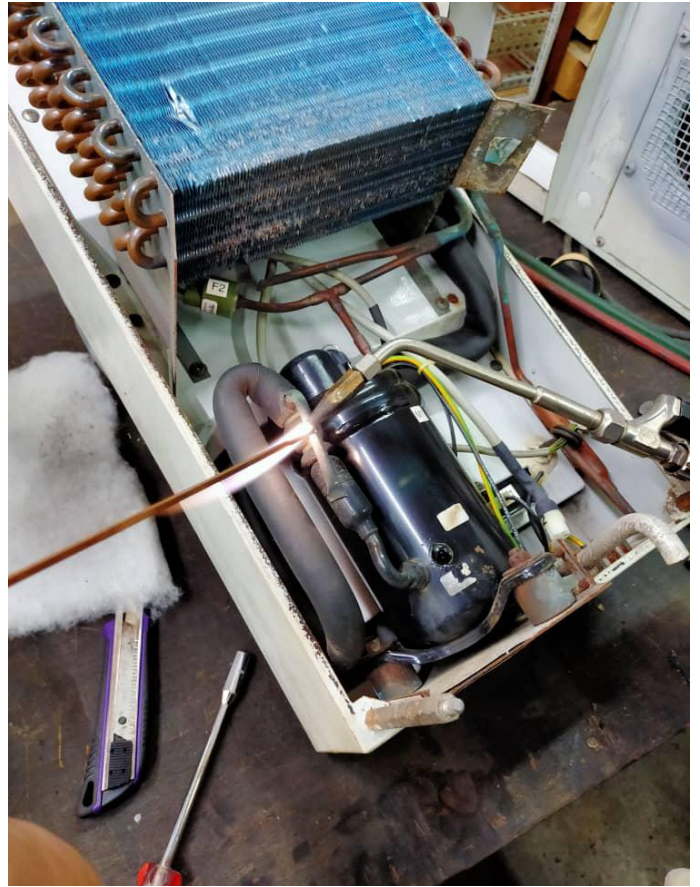
Schaltschrank - Kühlgerät
Enclosure Cooling Unit
Climatiseur pour armoires électriques

Bemessungsspannung Rated voltage	230 V / 50Hz 1~	230 V / 60Hz 1~
Bemessungsstrom Rated current	2,3A	2,4 A
Anlaufstrom Starting current	5,6A	5,6 A
vorzuschaltende Sicherung Pre-fuse T	10 A	10 A
Bemessungsaufnahme Nominal refrigeration capacity	L35 L35 480 W L35 L50 530 W	550 W 640 W
Nutzkühlleistung Usefull cooling output DIN 3168	L35 L35 750 W L35 L50 510 W	780 W 540 W
Kältemittel/Füllgewicht Refrigerant/Charge zul. Druck (PS) allowable pressure (PS)	R134 a, 280 g (10 oz), Fluid Group 2 HD/HP 28 bar, ND/LP 16bar HD/HP 408 psi, ND/LP 232 psi	
Temperaturbereich Temperature range	Min/Max TO 20 °C - 55 °C (52 °C 60Hz)	
Geräuschpegel Noise level	64 dB(A)	
Schutzart Schutzart EN 60529	IP 54	
IP-Code Innenkreislauf Internal circuit	IP 34	
Außenkreislauf External circuit	22 kg	
Gewicht Weight	05.11.07	
Datum Date	D 5909	
Fabr.-Nr.: Production No.		
maintain the environmental integrity of Type 12		
ISO 9001/14001 certified		

DICHTHEIT GEPRÜFT
Leakage tested EN378-2
RoHS compliant



Best Solution : To dismantle the panel and taken back to our workshop for repairing



Repaired panel is brought down to site for installation





Panel cooler running like new again.



**Aqseptence
Group**

ASH MANN VACUUM SERVICES SDN BHD

Letter Box 5, Room 1203, 12th Floor,
Wisma Pahlawan, Jalan Sultan Sulaiman,
5000 Kuala Lumpur, Malaysia
Tel.: +60162056189 , +60163416189, +60167743229
E-mail: contact@ashmannservices.com
Website: www.ashmannservices.com