

Vacuum Vessel disludging works



Objective: To find permanent solution for slow discharge rate issue

Work Method:

- 1) To dismantle the gate valve between discharge pump and vacuum vessel
- 2) To discover what is the reason for slow water discharge although both pumps running
- 3) To open up vacuum vessel manhole for cleaning works
- 4) To remove any substance that restricts the discharge flow
- 5) To reassemble and run the discharge line

Cause of Problem: Batches of strings and clothes stuck at the 90deg elbow under the vacuum vessel and got compacted that eventually restricted the discharge flow to as high as 95%..

Have solutions attempted solved the problem permanently : Yes it did, problem solved.



Water level has reached the max level and auto cut off the vacuum pumps



Some remaining water was flushed out manually to avoid excessively spillage in the vacuum station



No sand detected



discharge pump is turned on, no water flowing



One way valve is opened, it's clean and no water was flowing although discharge pump was turn on.

It's proven that the discharge pump was not able to receive/pull water from vacuum vessel and it starts to vibrate terribly after a few seconds' of running it.



Discharge pump looks clean and no sand detected





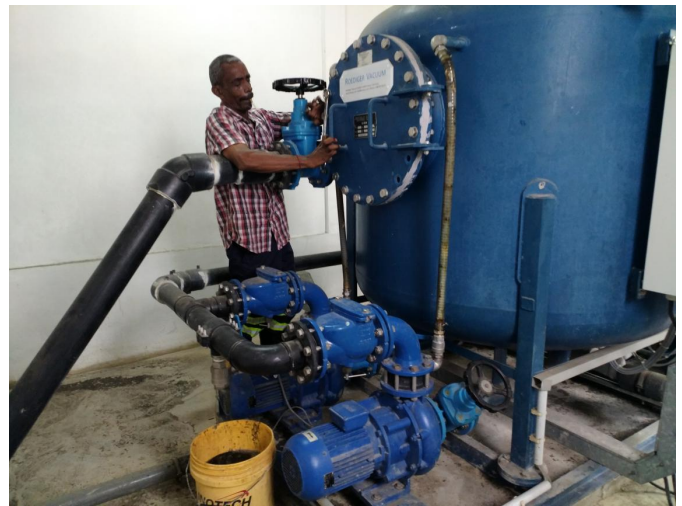
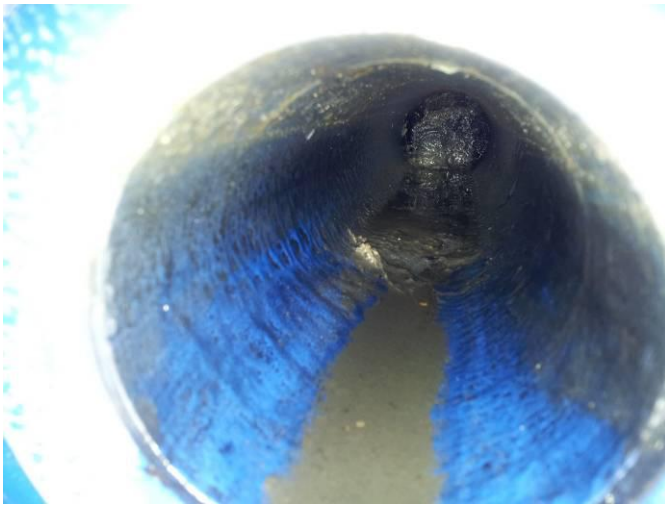
A few batches of strings n cloths found in the discharge line



Compacted batches of strings n cloths



Discharge pump does not show any sign of damages or stuck



We began opening the manhole on the vacuum vessel , gasket was damaged (**need replacing**)



View from sensor manhole



Custom made rubber gasket



Sewage water manually removed and removed 1 feet height of sand collected at bottom portion of the vessel

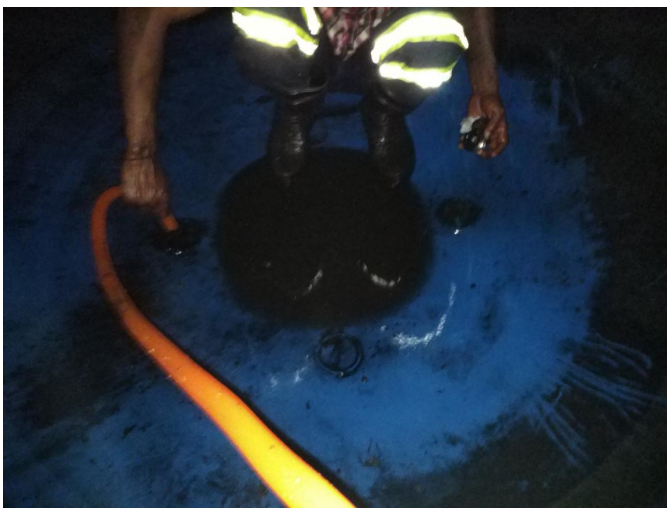
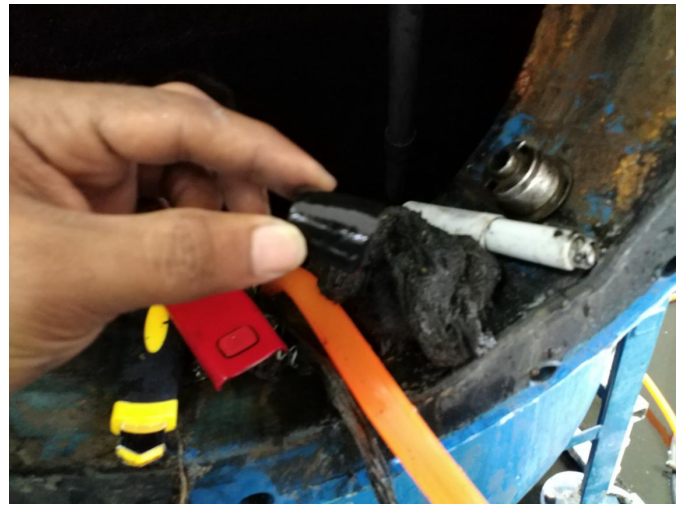


Removing it has enable the flow of the discharge



Sensor was tied up with a bundle of strings , carefully removed





Internal of vessel was cleaned with running water





Old gasket removed and surface sanded



Gasket adhesive applied



Customized larger and thicker rubber gasket used





Internal Leak test conducted for an hour , no pressure leak detected

All sensors and discharge pumps working fine.



**Aqseptence
Group**

ASH MANN VACUUM SERVICES

Letter Box 5, Room 1203, 12th Floor,
Wisma Pahlawan, Jalan Sultan Sulaiman,
5000 Kuala Lumpur, Malaysia
Tel.: +60162056189 , +60163416189, +60167743229
E-mail: contact@ashmannservices.com
Website: www.ashmannservices.com