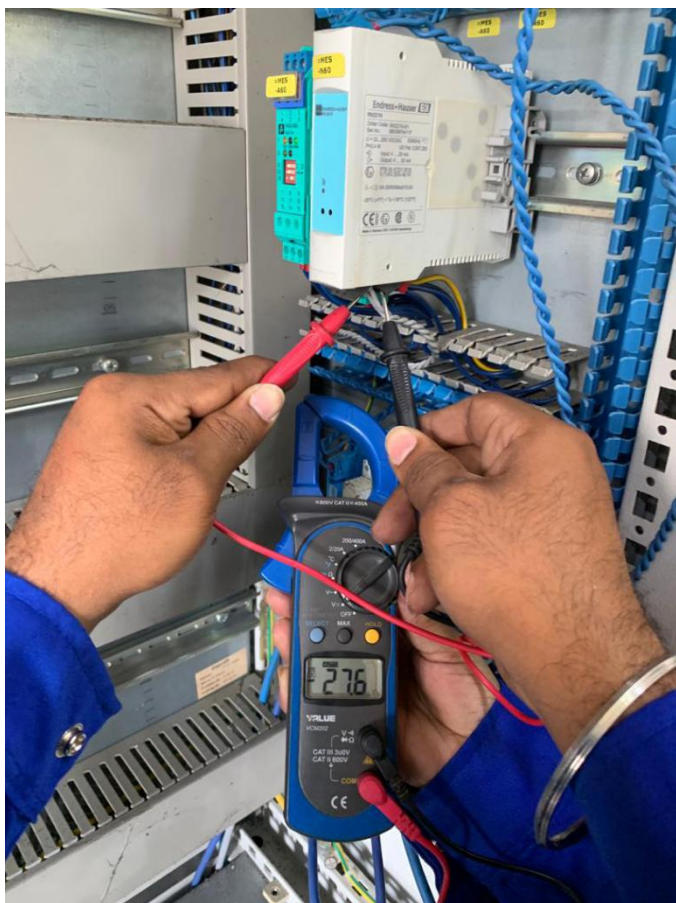
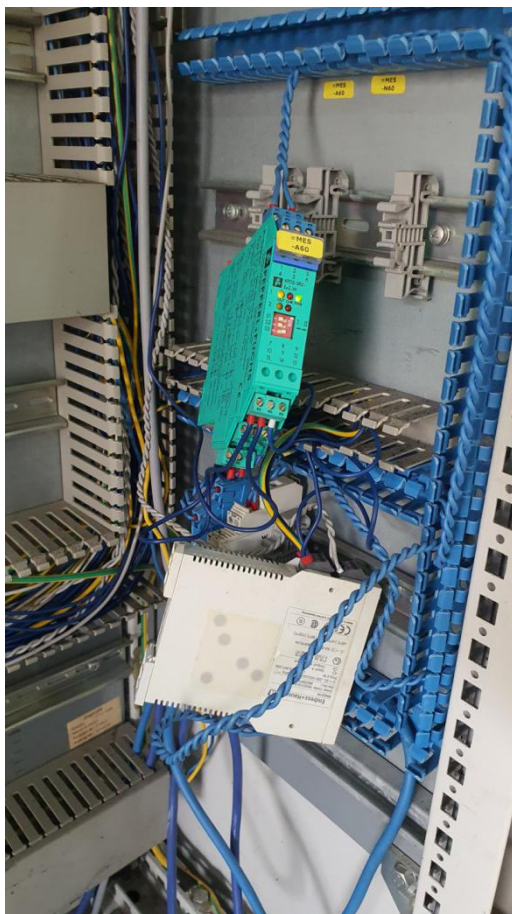


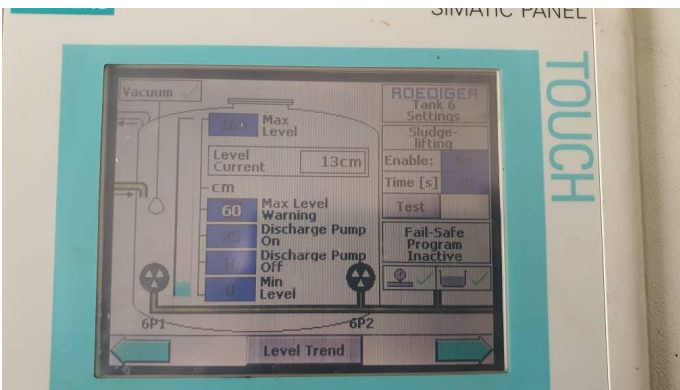
Panel transmitter supply Replaced



The malfunctioned panel transmitter is causing the sewage level sensing in vacuum vessel is not possible







Transmitter Supply replaced , water level sensing in vacuum vessel is enabled



ASH MANN VACUUM SERVICES SDN BHD

Letter Box 5, Room 1203, 12th Floor,
Wisma Pahlawan, Jalan Sultan Sulaiman,
5000 Kuala Lumpur, Malaysia

Tel.: +60162056189 , +60163416189 , +60167743229

E-mail: contact@ashmannservices.com

Website: www.ashmannservices.com