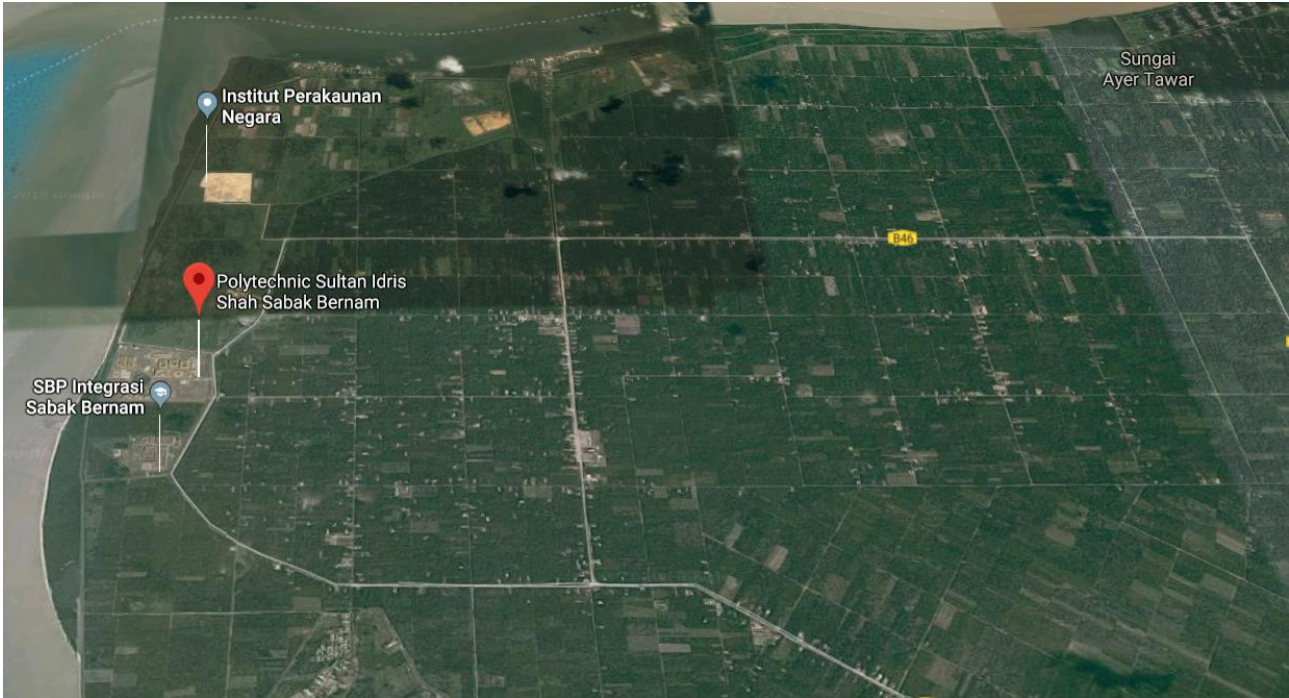


Polytechnic Sultan Idris Shah Sabak Bernam / MALAYSIA



Location :RR69+FG Sungai Ayer Tawar, Selangor



Data Teknikal:

Jumlah PE	1,650
Tanki Vakum: logam besi	2 x 13 m ³
Pam Vakum:	3 buah
Kapasiti menyedut:	3 x 11 kW 3 x 400 m ³ /h
Pam discaj :	2 buah
Kapasiti pam :	2 x 4.7 kW
Penyambungan Chamber ke utiliti	
Sistem 1 valve dalam 1 chamber :	55
Sistem 2 valve dalam 1 chambr :	8
Biofilter :	empat segi tepat , 5 x 9m
Injap Interface:	Injap Roevac [®] 2.5"
Ditauliahkan:	Mac 2003

Technical Data:

Connected PE	1,650
Vessel Tank:	2 x 13 m ³ Steel Vacuum Tanks
Vacuum Pumps:	3 Units
Pump Suction Capacity:	3 x 11 kW 3 x 400 m ³ /h
Discharge Pumps:	2 Units
Pump Capacity:	2 x 4.7 kW
Utility Connections:	
Single valve collection chamber :	55
Double valve collection chamber :	8
Interface Valve Units	rectangular , 5 x 9m 2.5" Roevac [®] Valves
Commissioning:	March 2003



**Aqseptence
Group**

ASH MANN VACUUM SERVICES

Letter Box 5, Room 1203, 12th Floor,
Wisma Pahlawan, Jalan Sultan Sulaiman,
5000 Kuala Lumpur, Malaysia
Tel.: +60162056189 , +60163416189, +60167743229
E-mail: contact@ashmannservices.com
Website: www.ashmannservices.com

