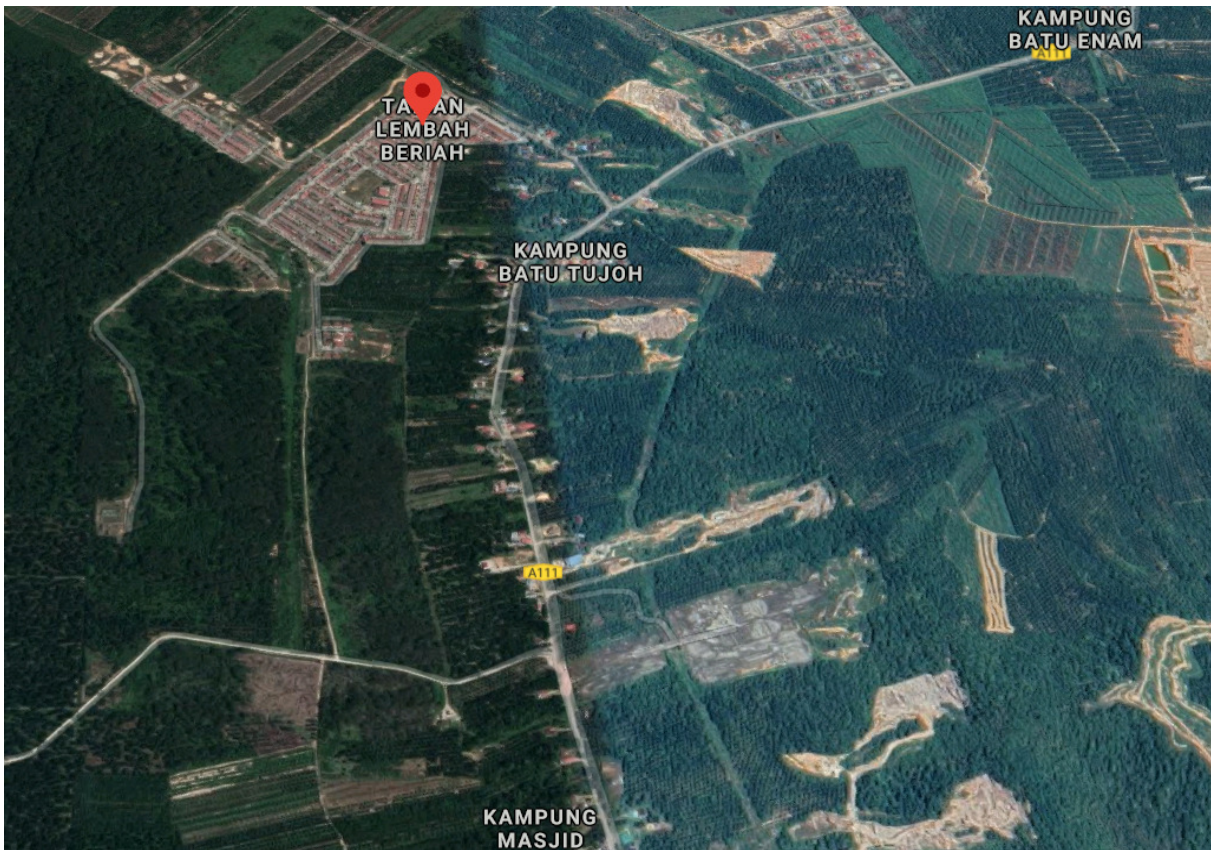


Kerian (Lembah Beriah) / MALAYSIA



3M92+CQ Bagan Serai, Perak



Data Teknikal:

Jumlah PE 4.000
 Tanki: logam besi 2 x 20 m³
 Ditanam mendatar dalam tanah
 Pam Vakum: 3 buah
 Kapasiti menyedut: 3 x 15 kW
 3 x 630 m³/h
 Pam discaj : 2 buah
 Kapasiti pam : 2 x 9 kW
 Penyambungan Chamber ke rumah: 145
 Injap Interface: Injap Roevac® G65
 Biofilter: Segi 4 tepat 6 x 10 m
 Ditauliahkan: August 2002

Technical Data:

Connected PE 4,000
 Vessel: 2 x 20 m³ Steel Vacuum Tanks
 horizontally installed, buried in the ground
 Vacuum Pumps: 3 Units
 Pump Suction Capacity: 3 x 15 kW
 3 x 630 m³/h
 Discharge Pumps: 2 Units
 Pump Capacity: 2 x 9 kW
 House Connections: 145 Collection Chambers
 Interface Valve Units G65 Roevac® Valves
 Biofilter rectangular, 6 x 10 m
 Commissioning: August 2002



**Aqseptence
Group**

ASH MANN VACUUM SERVICES

Letter Box 5, Room 1203, 12th Floor,
 Wisma Pahlawan, Jalan Sultan Sulaiman,
 5000 Kuala Lumpur, Malaysia
 Tel.: +60162056189 , +60163416189, +60167743229
 E-mail: contact@ashmannservices.com
 Website: www.ashmannservices.com