

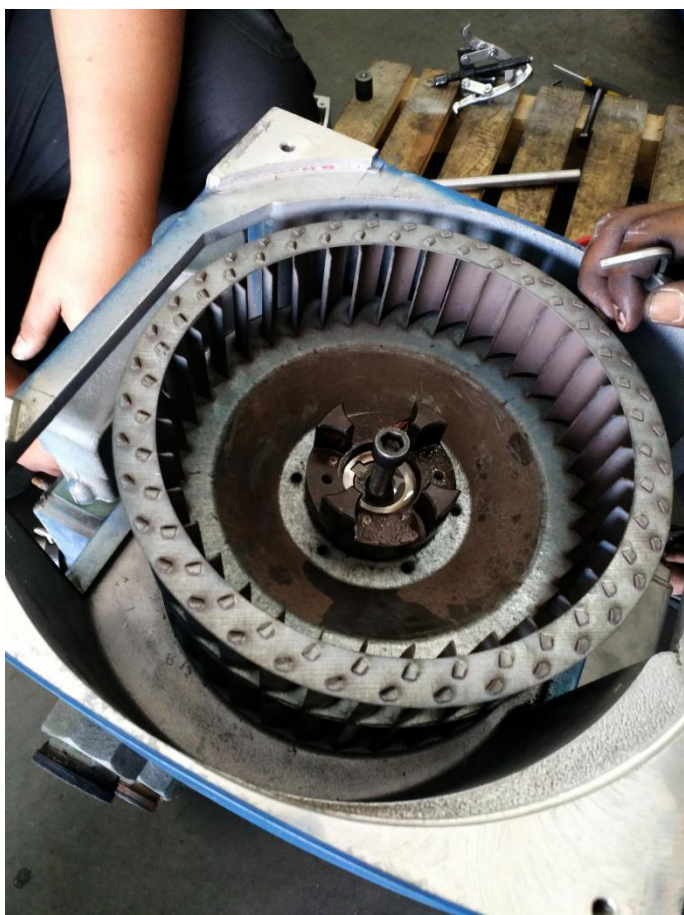
# Vacuum pumps removal and overhauling works

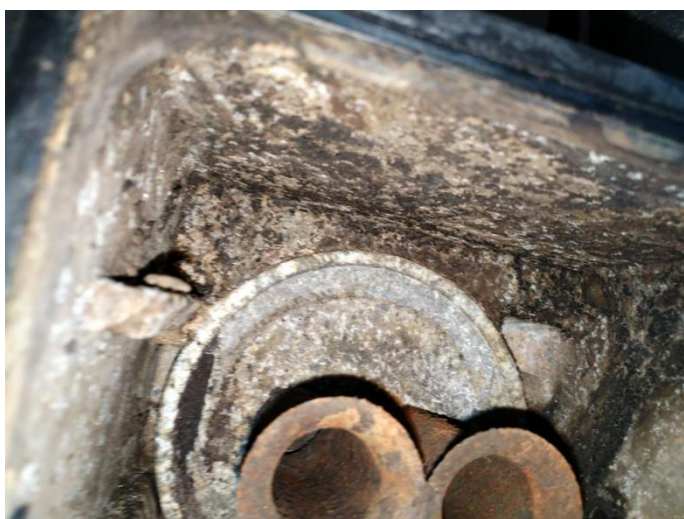
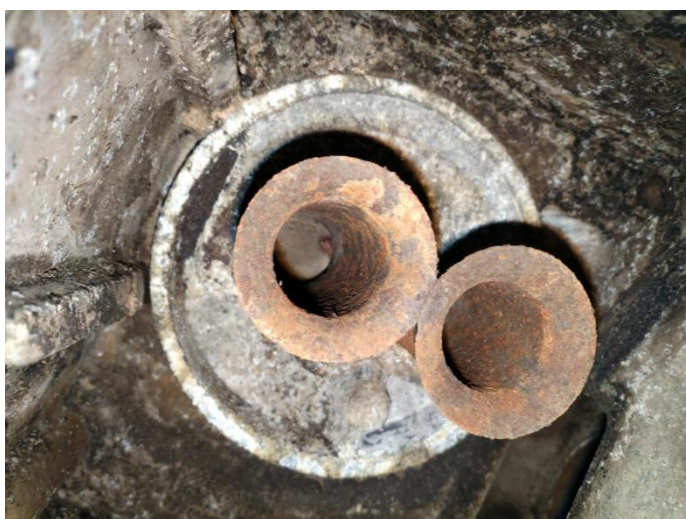
For compact station 360 series - Becker pump



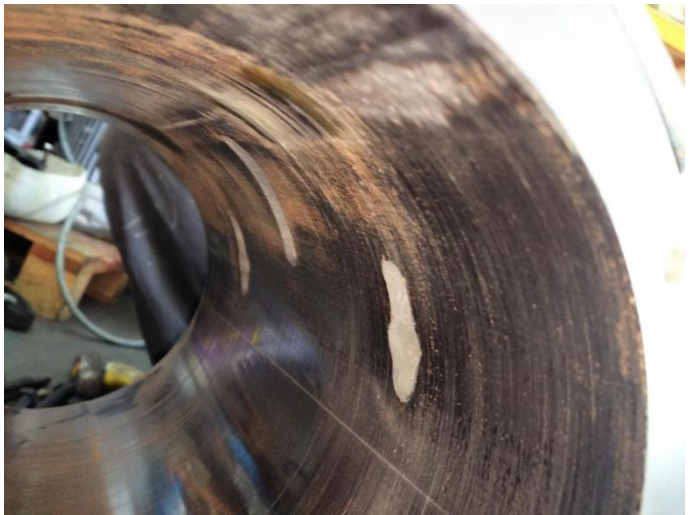
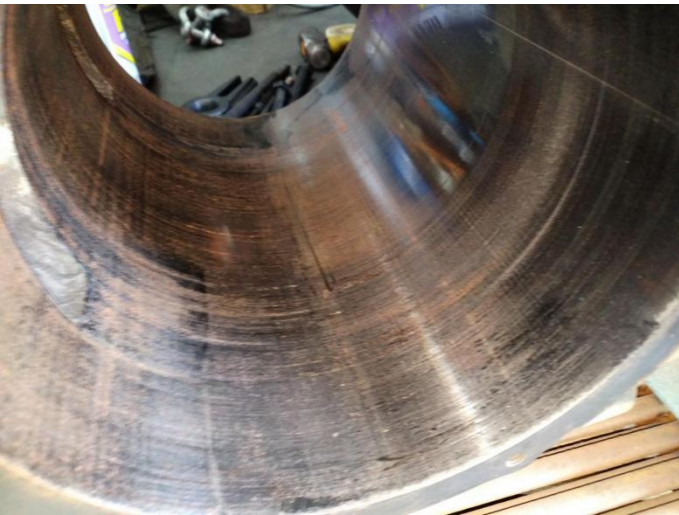
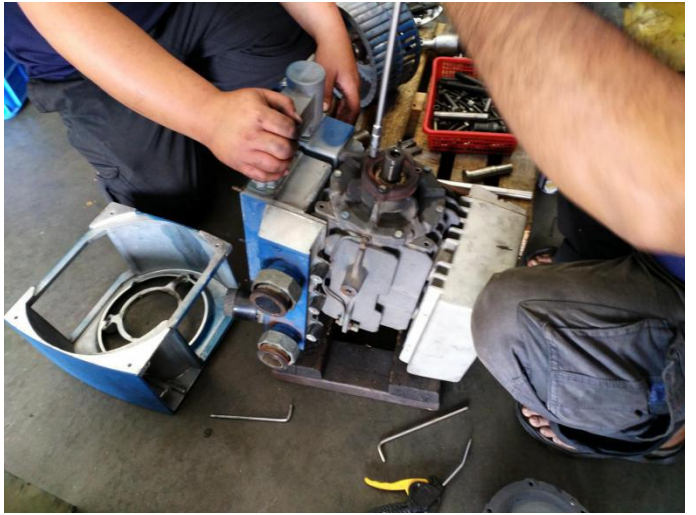
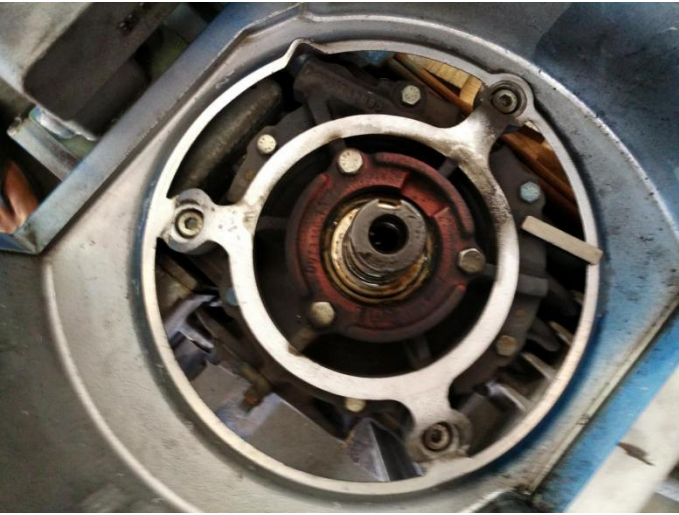
## Vacuum pump condition inspection :

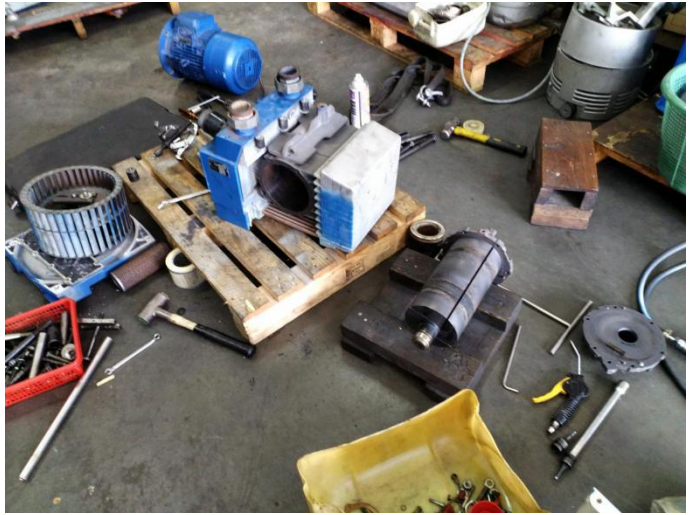
- Vanes found has been warn out
- cylinder has severe scratch marks
- Excessive wear at filtration and exhaust area
- Bearings damaged





















All pumps re-installed and inspected :

- Perfectly working and system back to operational as it should
- Performance test carried out and the vacuum generates extremely fast



**Aqseptence  
Group**

**ASH MANN VACUUM SERVICES SDN BHD**

Letter Box 5, Room 1203, 12<sup>th</sup> Floor,  
Wisma Pahlawan, Jalan Sultan Sulaiman,  
5000 Kuala Lumpur, Malaysia  
Tel.: +60162056189 , +60163416189, +60167743229  
E-mail: [contact@ashmannservices.com](mailto:contact@ashmannservices.com)  
Website: [www.ashmannservices.com](http://www.ashmannservices.com)