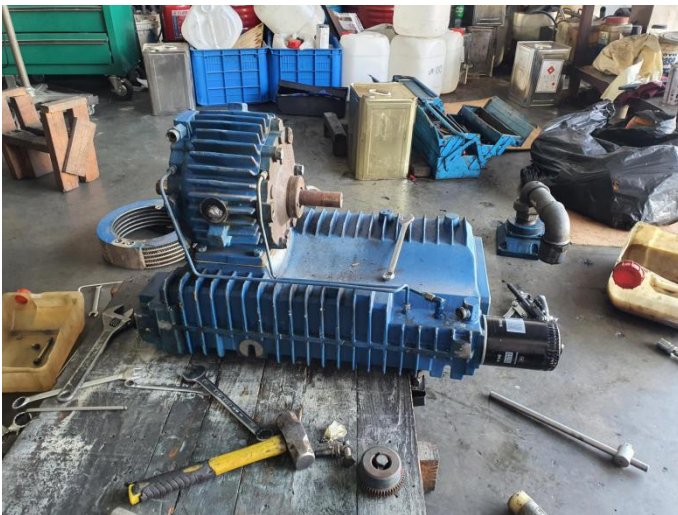
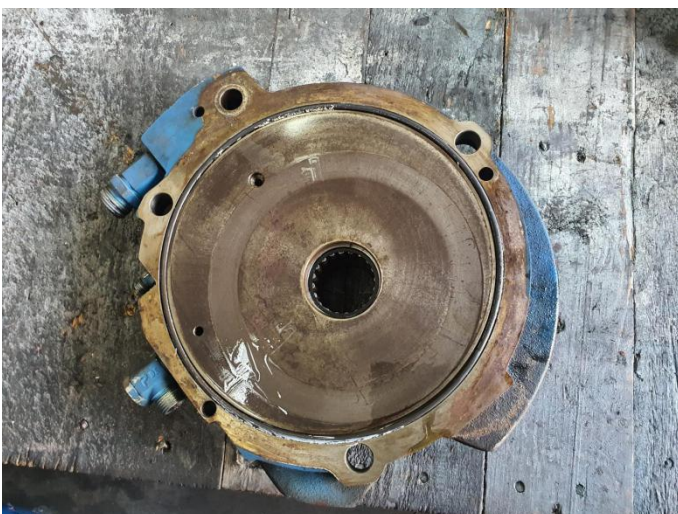


Roediger Rotary Vane Vacuum Pump Overhauling Works



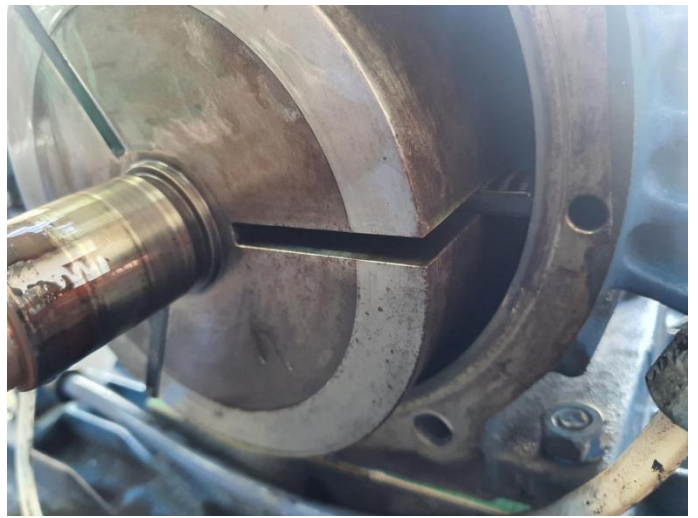
Oil return connection has jammed and damaged - To replace new



Side plate slightly worn out , Bearing damaged



Pump vanes badly damaged , impossible to build pressure



Bearing seal damaged, Vacuum pump oil will always need to top up as it will flow out in exhaust line



Vanes damaged , rotor requires polishing



Cylinder worn out , requires polishing to reduce friction upon running



End plate requires polishing



Vacuum pump oil completely emulsified with water and sewage , **not usable**





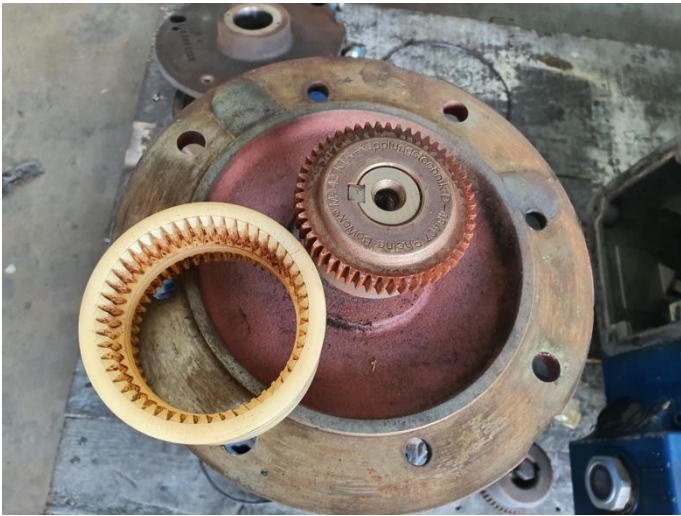
Pump internal strainer choked with dust, debris, sewage and moisture
Installing external strainer is mandatory

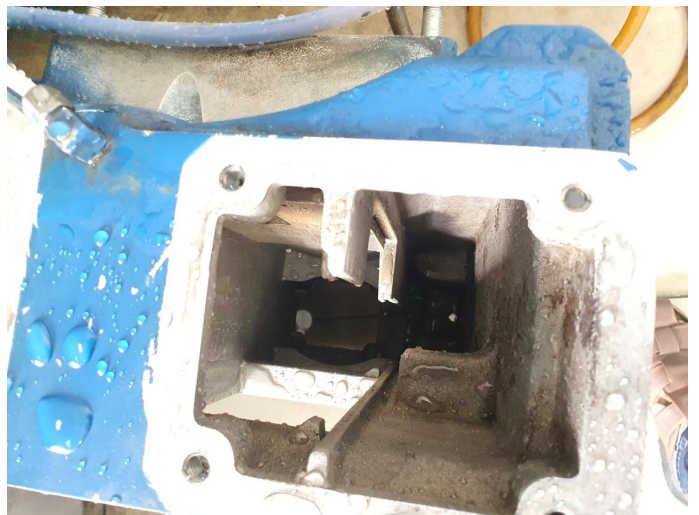


Exhaust valve jammed and the body rusted, damaged due to moisture
Installing external strainer is mandatory



All parts will be chemical washed to ensure no debris and particles attached onto the metal surface

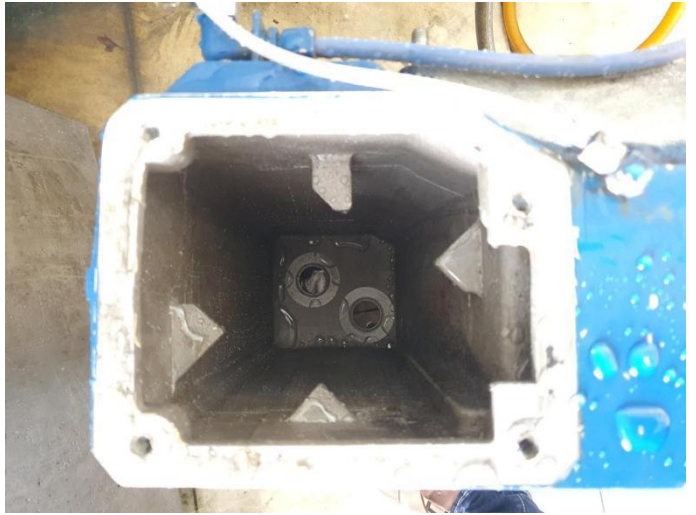




Pump Module chemically washed



Sludge removed from pump



New set of seal and o-rings







New Exhaust valve installed and base polished





New Original replacement kit

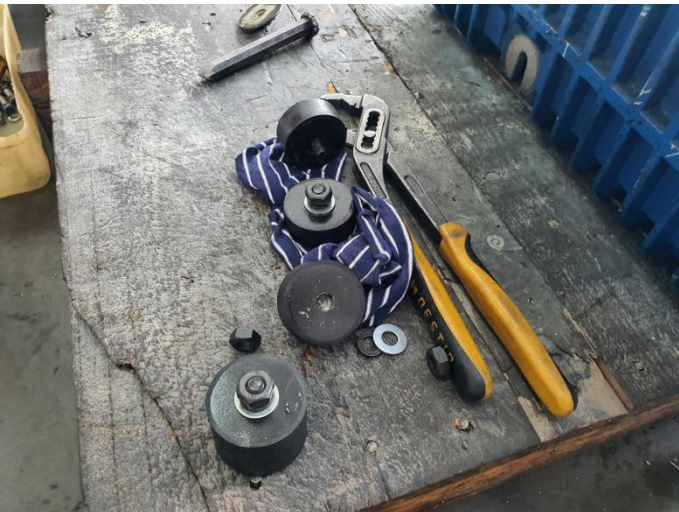


New Vanes installed (Original)



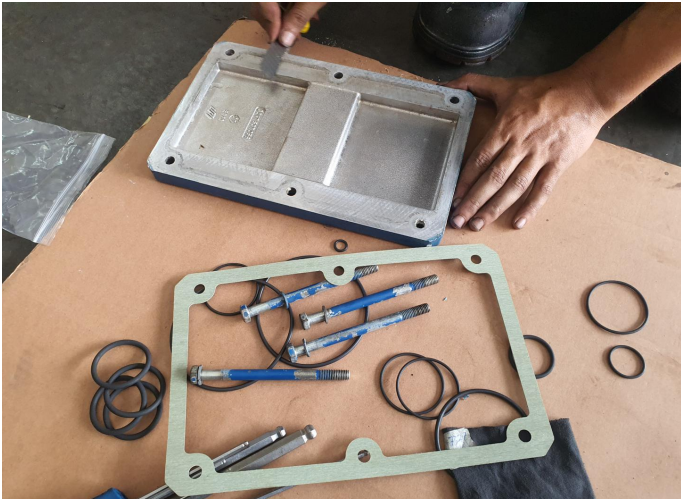
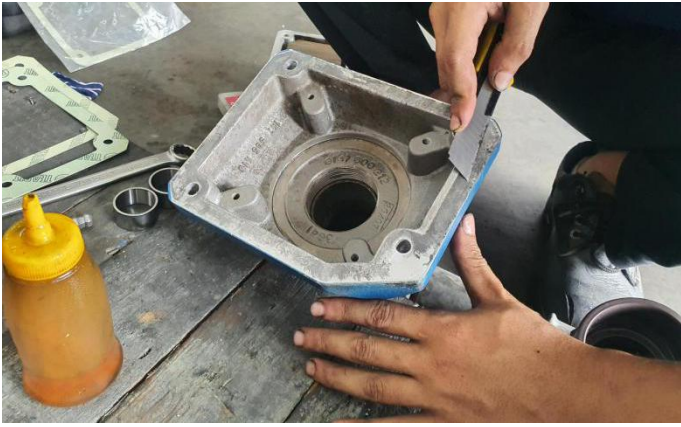


New coupler installed



New set of rubber foot





Pump passed the pressure and ampere test



Pump Painted and ready for delivery



ASH MANN VACUUM SERVICES SDN BHD

Letter Box 5, Room 1203, 12th Floor,
Wisma Pahlawan, Jalan Sultan Sulaiman,
5000 Kuala Lumpur, Malaysia
Tel.: +60162056189 , +60163416189 , +60167743229
E-mail: contact@ashmannservices.com
Website: www.ashmannservices.com